

RAINMAN™ TWIN PUMP

Professional Commercial System

RAINMAN™ STANDARD T

RAINMAN™ ELITE

complete systems solutions for every application



RAINWATER SYSTEM SPECIALISTS

TWIN

FreewaterUK intelligent rainwater systems have been created to cater for the specific requirements of the UK market, *providing complete system solutions for every application.*

Developed in response to water supply, demand and disposal problems, which face both homeowners and business alike.

“Microrain” Microprocessor supporting:

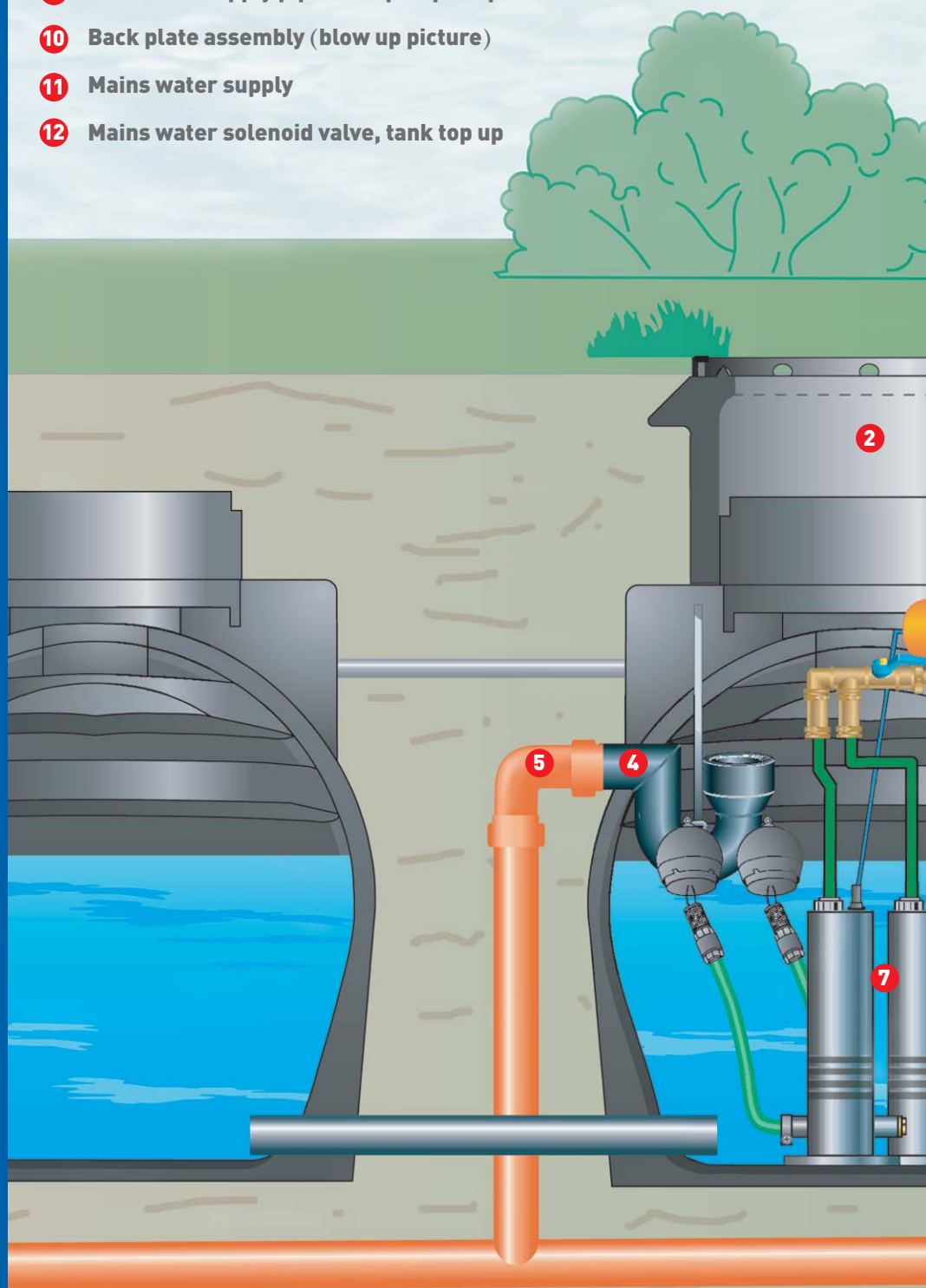
- 32 character LCD display, clear word format
- R I M wireless Technology
- Tank volume display
- System pressure display
- Measured automated mains water tank top up
- Microchip pressure/flow device (no moving parts)
- Dual pump run dry protection
- Integrated programme, test run system components
- Routine auto run of all system components
- Auto system pressure side leak detection
- System error messages

Patented Technology “R I M”

“Remote Integrated Measurement”,
Wireless connection supporting:

- Tank volume
- Automated mains water tank top up

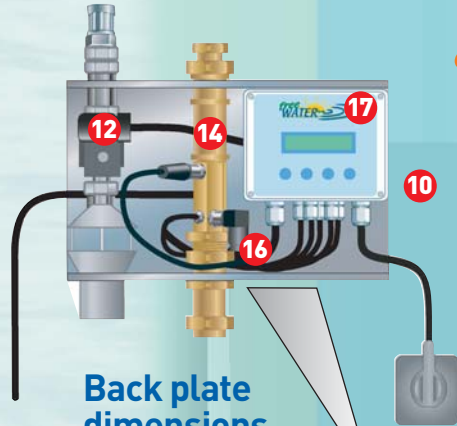
- 1 Rainwater from roof into tank
- 2 PE tank with telescopic access and 100mm push fit connections
- 3 VF1 Volume filter 500m² roof capacity
- 4 Overflow siphon with rodent barrier
- 5 Overflow to soakaway/storm drain
- 6 Calmed inlet, incoming rainwater
- 7 Submersible pumps with floating ball and filter sieve
- 8 Service ducting 100mm from house to tank
- 9 Rainwater supply pipe from pumps to pressure/flow device
- 10 Back plate assembly (blow up picture)
- 11 Mains water supply
- 12 Mains water solenoid valve, tank top up



P U M P

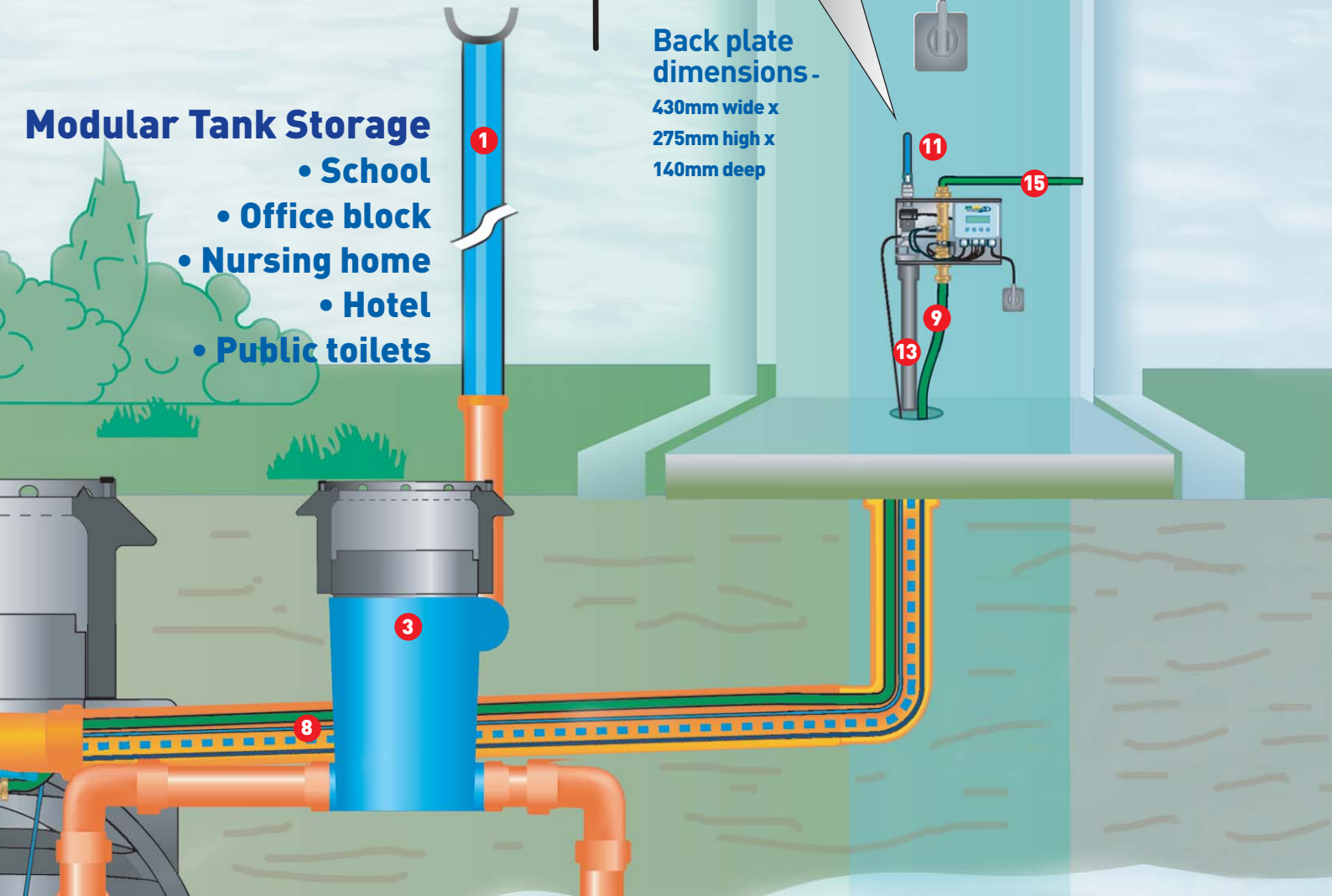
- 13 Mains water pipe to service duct
- 14 Pressure/flow device, (no moving parts)
- 15 Rainwater connection to toilets, washing machine and outside tap
- 16 "R I M" Remote Integrated Measurement device
- 17 Microprocessor unit, LCD % display

"Back plate pre-wired and plumbed"



Back plate dimensions -
430mm wide x
275mm high x
140mm deep

- ## Modular Tank Storage
- School
 - Office block
 - Nursing home
 - Hotel
 - Public toilets



Average daily use for a family of 4 = 540 ltrs

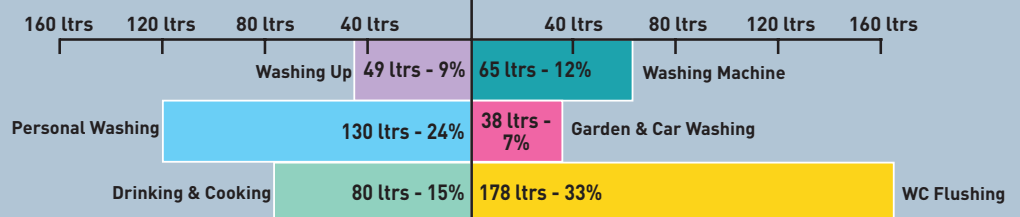
(135 ltrs per person per day)

Mains Water

48% = 260 ltrs

Rain Water

52% = 280 ltrs (average saving)



- Total usage = 540 ltrs per day
- 280 ltrs = 52% saving
- Saving more than 102m³ per annum

SYSTEM- Operation

Rainwater falling on the roof flows along the gutter through the down pipe into the tank, via the V F 1 self cleaning filter(s), removing unwanted particles from the rainwater. The filtered fast flowing oxygen rich water is directed down through the calmed inlet to the bottom of the tank where it is deflected upwards oxygenating existing tank water, ensuring a further natural biological cleaning process takes place.

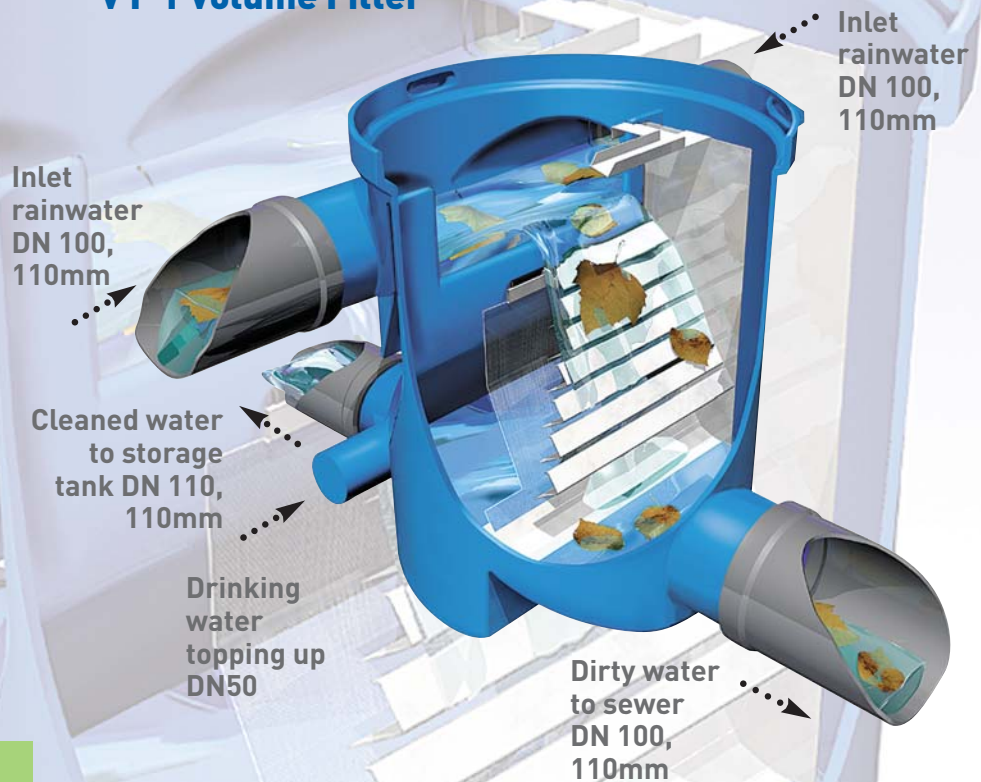
On demand the submersible pumps deliver the clean water to toilets, washing machine and outside tap etc. The system also has an automatic mains water tank top up

facility, ensuring a constant water supply is guaranteed even when tank rainwater levels are low. The V F 1 volume filter has many advantages over its competitors. Its unique efficient design enables almost 100% capture of the incoming rainwater and affords easy access for cleaning and maintenance. The polyethylene holding tank is manufactured specific to purpose, is of robust construction and ready fitted out, has push fit connections and telescopic entry access for adjustments to finished levels.

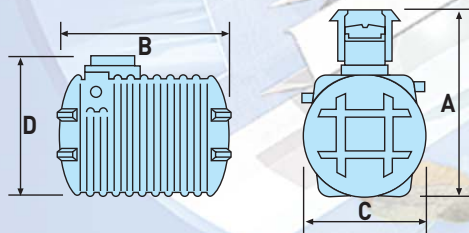
SPECIFICATIONS

“Rainwater quality must comply to the European Recreational Water Standard No: 76/160 EWG”

V F 1 Volume Filter



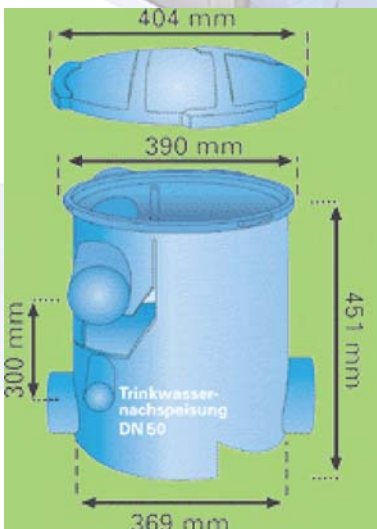
Tank Size Table



Tank Type	ET 3000	ET4500	ET 6000
A height mm	2230	2610	2840
B length mm	2400	2400	2400
C width mm	1400	1750	2080
D height mm	1745	2125	2355
weight kg	150	200	270
volume L	3300	4700	6500

SuDS / Source Control

There are ever increasing demands on developers and engineers (due to guidance documents such as PPG25, Building Regulations etc.) to consider sustainable drainage systems (SuDS) wherever possible and to incorporate source control approaches into surface water drainage systems.



Freewater UK Ltd

6 Lime Tree Close, Doddington Park, Lincoln LN6 0RT, UK

✉ info@freewateruk.co.uk ☎ 0870 2416964 📠 0870 2416964

www.freewateruk.co.uk